



BUILDING+RENEWING+BELIEVING:

Holy *Spaces*

*A Capital Campaign supporting
the ministry of Camp Kinard.*

A brief *History*

1972 - 200 Acres & initial buildings are dedicated at Camp Kinard.

1978 - The 1st of four Lodge Units at Camp Kinard is completed.

1985-89 - Pavilions and Campgrounds welcome their first guests. Rev. Delano Ricard is called as Executive Director.

1998 - Rev. James Addy is called as organization's President. Ricard Welcome Center, Caughman Center, and final Lodge Units are built.

2000 - Fund for future chapel is established.

2005 - Deacon Dallas Shealy is called as Executive Director of SCLRC.

2007 - Phase I of Building+Renewing+Believing Campaign begins.

You shared...

We listened

Since 1972, the board and leadership of the South Carolina Lutheran Retreat Centers has relied on the continual support and feedback from our many committed supporters.

It is only because of YOUR involvement that this ministry has been able to expand and serve thousands of guests for over a half century!

In 2007, SCLRC kicked off Phase I of our Building+Renewing+Believing Capital Campaign to further ministry at Camp Kinard & Coastal Retreat. You asked us to **build up** our current facilities and improve the overall guest experience for those on retreat.

Three years later, major work was completed at both Camp Kinard (Dining Hall renovations) and Coastal Retreat (upgrades to Dining Room/ Kitchen, lounges, and front roofing).

In 2014, supporters of SCLRC asked us to continue **renewing** these special places as they looked ahead to the future. Phase II was introduced shortly thereafter with projects being completed once again at both Camp Kinard (Cottage & Lodge Room upgrades, addition of Dining Hall restrooms) and Coastal Retreat (new flooring and entire replacement of leaking roof/soffits).

Another priority to many of our supporters was paying off existing debt to strengthen the financial health of the South Carolina Lutheran Retreat Centers.

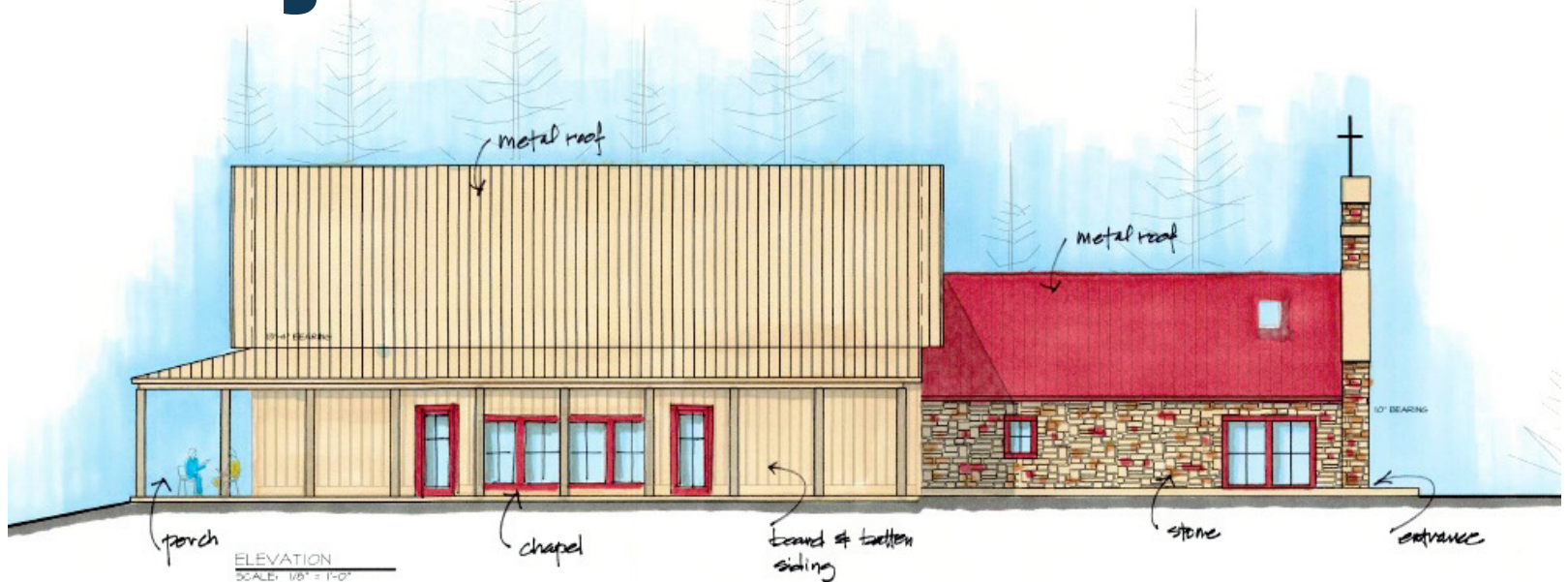
In 2019, our staff celebrated as not one but two Lutheran Men in Mission loans were paid off in full. Additionally, every project of Phase II has been paid in-full through campaign giving.

As we dream about the future of this ministry, particularly at Camp Kinard, individuals have repeatedly spoken of building a new Chapel on site.

We **believe** that the addition of this new space, along with a new entrance and swimming pool, will allow the South Carolina Lutheran Retreat Centers to further our mission of providing **Holy Spaces** for God to change lives!

Building+Renewing+Believing: Holy Spaces

Projects & Goals



Chapel

Estimated Cost: \$1,800,000

One of the primary goals of the Holy Spaces Campaign will be building a long-awaited chapel at Camp Kinard (pictured above; right). A site has already been cleared overlooking the lake, which will soon become the focal point of camp activities for the many groups and programs hosted there. With seating for up to 180 people and a 287 sq.ft. kitchen, this multi-purpose space will also feature a wraparound porch to take full advantage of scenic lake views.

New Pool

Estimated Cost: \$300,000

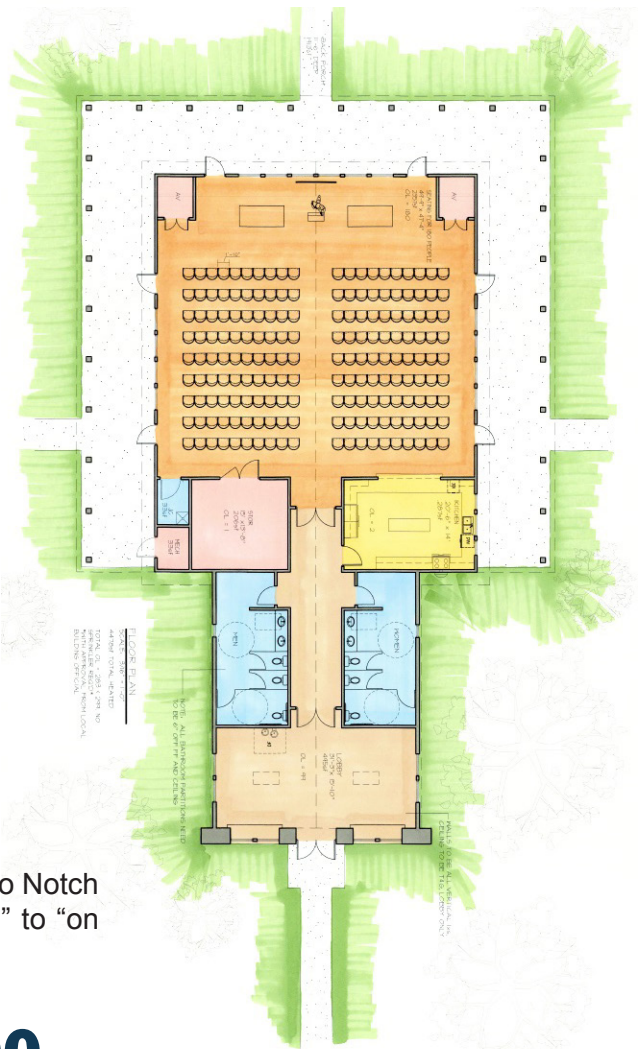
Groups who stay at Camp Kinard during the hot summer months seek a much needed respite from the heat at the pool. Future construction will replace the existing pool originally built in 1974 and feature added accessibility for all guests.

New Entrance & Roadway

Estimated Cost: \$100,000

Camp Kinard's entrance will be moved farther southwest on Two Notch Road. This will create an enhanced transition from "real world" to "on retreat."

Campaign Total: \$2,200,000



“Being [at Camp Kinard] in this place apart – with others who are also away intentionally – creates a very freeing atmosphere, where we can get to know others better, and have the time for real, true conversations about things that are important to us. It’s a place where Christ brings us closer to others, and to himself, surprising us in ways we’d never have anticipated.”

-Celie Addy, SCLRC Campaign Committee

Outdoor ministry is extremely important for many reasons. Relationships are fostered, developed, and strengthened. Strong memories, which far outlast the few days of retreat, cement bonds of trust and friendship among people of all ages and backgrounds. Time spent outdoors creates an understanding of our role as caretakers of God’s amazing creation. Campers have a heightened sense of growth and maturity as they take on different challenges. Simply unplugging from our technological devices allows for respite, renewal, and rest. Faith formation at camp strengthens and complements the growth happening in congregational life.

Now more than ever, in these challenging times, our congregations and our communities need partners to help accomplish their mission. SCLRC can help local

congregations to strengthen their communities through gatherings, service projects, retreats, etc.

Investing in outdoor ministries has a return on investment (ROI) that lasts for generations. Again and again, we hear from individuals and congregations, telling us what their time together at Camp Kinard means to them.

We know what we are doing works. Outdoor ministry changes lives for the better. Countless studies and copious amounts of research point to that conclusion. We know, too, that in order to grow our ministry, we need to grow our capacity. We deeply desire to say “yes” to people when they call and want to book our retreat centers. We strive to provide what they need for reaching their goals, hopes and dreams for their retreats.

An updated entranceway, a new pool, and a wonderful chapel will help us do just that. These facilities will embody our ministry of welcome and hospitality, fostering a climate that supports faith formation.

Please join us in making these dreams a reality not only for today’s campers, but for all the campers to come. You may want to honor someone special in your life or memorialize a saint whose life of service inspired you. You may wish to give a lasting tribute that will honor a particular congregation or ministry that has made a difference in your life.

Please consider a significant, substantial contribution that provides a legacy for generations to come.

Thank you!



Giving & Naming *opportunities*

The Chapel

The new chapel at Camp Kinard will provide a central worship space and multipurpose meeting area for guests. The hillside chapel, nestled among the pines and overlooking the upper lake, will be the focal point of the new main entrance to Camp Kinard. **\$400,000**

Chapel Nave

Inside the chapel, the nave will create a worship space that brings the serenity of the surrounding lake and pines together with an impactful indoor worship space. The nave will also provide guests with a flexible space capable of multiple configurations to best meet the worship and ministry needs for each group. **\$200,000**

Chapel Narthex

Entering the chapel, the narthex will create a welcoming space for each visitor to experience a sense of renewal from the first step through the threshold. This space will create a central point for fellowship for chapel activities, and also provide a flexible location for more intimate meeting needs. **\$64,000**

The Lakeside Lanai

Overlooking the upper lake, the lakeside lanai will serve as the backdrop for the chapel and provide guests with an outdoor space for individual reflection or as an outdoor gathering area. **\$32,000 (RESERVED!)**

Chapel Verandas

To the left and right of the chapel, the verandas will create a quiet place for guests to relax in rocking chairs, listen to the sounds of birds in the pines, or have quiet conversations with others on retreat. **\$24,000 (2 available)**

The Kitchen

At the center of the new chapel will be a full kitchen, ready for groups to prepare nourishing meals together or for a caterer to provide service. **\$24,000**

The Portico

At the entrance of the chapel, the portico will provide a weather-friendly entrance for easy accessibility for all guests. Connecting to the parking area and the new entrance, the portico may also be used as an outdoor gathering space. **\$20,000**

The Scatter Garden

On the hillside adjacent to the chapel and overlooking the lake, the scatter garden will provide a defined space with benches. In this quiet place, families and friends may honor loved ones by spreading their ashes among the tranquil pines. **\$15,000**

Chapel Sacristy

Connecting to the nave, the sacristy will provide an easily accessible and secure location for the worship furnishings, sacred vessels, and vestments to be stored and prepared. **\$12,000**

The Cross Window

Above the altar at the front of the chapel, the window will focus worshipers on a beautiful stained glass cross. As the sun shines through the colorful window, light will fill the worship space and illuminate the cross to beautify the worship space. **\$12,000 (RESERVED!)**

The Altar

Central to the worship space, the altar will bring together the entire space around the holy table during worship services. **\$12,000 (RESERVED!)**

The Baptismal Font

The font will not only allow for individuals and families to celebrate the sacrament of Baptism but it will also allow all Camp Kinard chapel visitors to remember their baptism as they gather. **\$10,000 (RESERVED!)**

The Indoor Room-Dividing Planters

The chapel will provide a large multi-use space for groups, but sometimes a more intimate space is needed. These attractive indoor planters will easily move to make the space just the right size for every event. **\$5,000 (multiple available)**

(continued on next page)

The Pool

A key landmark to any summer camp experience, the new pool will create a fully-accessible recreational pool where guests can be refreshed from the summer heat and create lifelong memories with friends at their camp experience. **\$200,000 (RESERVED!)**

Pool Bath House

Located beside the pool, the bath house will provide the necessary accessible facilities for groups to enjoy those long summer afternoons at the pool. **\$30,000 (RESERVED!)**

Pool Deck

Surrounding the new pool, the pool deck will create an accessible gathering space to soak up the summer sun in lounge chairs, hang towels while taking a swim, and an inviting space for guests to relax by the pool. **\$20,000**

Poolside Pavilions

Creating gathering spaces near the pool, the existing pavilions offer accessible tables and chairs in defined spaces that are perfect for small group gatherings, respite from the hot summer sun, and places to center visits to the pool. **\$12,000 (2 available)**

The Entrance Road

Creating a new primary entrance for Camp Kinard, the new entrance road will create a scenic main driveway, designed to center and renew guests as they enter the property, enjoying the sandhills and pines on the way to the chapel and the central roads to the rest of campus. **\$50,000**

Trail Benches

The Jesus Way is a gentle 1.5 mile loop around the camp. Sturdy new benches will provide moments of respite during the reflective hike. Benches will also serve as invitations to stop, rest, linger, pray, and enjoy holy conversation. **\$2,000/bench (many available)**

Renewal Chairs

Sitting in the stillness of camp is not possible without the key element of...a comfortable chair! Rocking chairs on a chapel veranda, benches near an outdoor gathering areas, and loungers by the pool are critical for creating relaxing gathering spaces for guests. **\$1,000/chair**

The Upper Lake

Located just downhill from the chapel, the scenic lake not only will provide a holy background to worship services and activities at the chapel but will continue to serve as a primary outdoor activity center for guests for boating, fishing, and quiet strolls. **\$100,000**

The Cottages

Defining the camp experience with overnight accommodations for groups, the six cottages at the center of the campus have provided years of memories and spiritual growth for small groups in its classic bunk beds and common areas. **\$20,000 (6 available)**

**Other unique named gift opportunities available upon request. To learn more, please contact SCLRC Executive Director Dallas Shealy at: dallas@sclrc.com or (803) 532-3183.*

In Kind *contributions*

As the campaign progresses and projects are complete, Camp Kinard will need many items that will fully furnish and outfit the new and upgraded facilities. Below is a sample list of some items that are expected to be needed:

- Worship vessels, vestments, and chapel furnishings
- Musical instruments and worship audio equipment
- Heating & air conditioning units
- Kitchen appliances and supplies
- Pool cover, accessories, towel stands, and toys
- Plantings of trees, shrubs, and flowers



Pledge your *support!*

The South Carolina Lutheran Retreat Centers has been authorized by SC Synod (ELCA) Council to present our campaign to local congregations and individuals. As we build for future ministry at Camp Kinard, we need your support! Contact SCLRC's main office to schedule a speaker and/or receive additional informational materials. Once a goal has been set by you and/or your congregation, support can be made as a one-time gift or three year pledge.

Total Gift Amount	Monthly Pledge (36 gifts)	Quarterly Pledge (12)	Annual Pledge (3)
\$10,000	\$278	\$834	\$3,334
\$7,500	\$209	\$625	\$2,500
\$6,300	\$175	\$525	\$2,100
\$5,400	\$150	\$450	\$1,800
\$3,600	\$100	\$300	\$1,200
\$2,700	\$75	\$225	\$900
\$1,800	\$50	\$150	\$600
\$1,000	\$28	\$84	\$334

Please send completed pledge cards or one-time contributions to: SCLRC, 6053 Two Notch Road, Batesburg-Leesville, SC 29070. When including checks, please make payable to "SCLRC" and include "Holy Spaces" in the memo. All gifts are tax-deductible as provided by law.

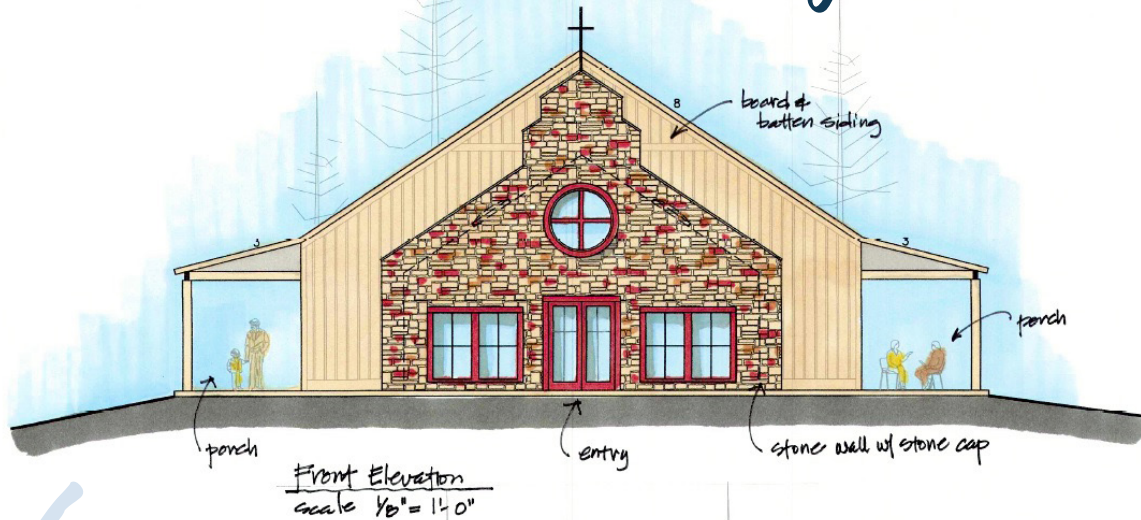
You can also **text "PLEDGE" to (803) 672-4898** to receive an automated response from Network For Good, our online payment processor.

Need more info? We invite you to contact the South Carolina Lutheran Retreat Centers' main office anytime. Our staff can be reached by phone (803-532-3183) or e-mail (contactus@sclrc.com).

**Scan with
your phone!**



Providing holy spaces
for God to change lives!



We are beyond excited to be celebrating 50 years of ministry right here at the South Carolina Lutheran Retreat Centers! With all that I've experienced during my time as the SCLRC Executive Director, I've learned that God's time is not always convenient, or what I had planned - especially over the past several years amid a global shift in focus. Could this be Kairos?

After a year of NOT being able to gather with family and friends, for retreats, for vacations, for worship, perhaps this campaign gives us is an opportunity to focus on what is truly important and to give us a goal for when we can all once again come together.

For as long as I have been Executive Director, we have longed for a chapel where groups can gather, regardless of the weather. A place that is the centerpiece of this camp that grounds us in our faith and in our identity as the baptized children of God. A chapel on a hill with the beauty of the rustling trees and the sparkling water – a place to gather, to

worship, to learn, to fellowship, to grow closer to God and to each other!

With a new chapel, what would be more fitting than to have a beautiful new winding entrance driveway that takes us from the bustle of our everyday life and brings us into this holy space?

And a new swimming pool that is accessible to all, no matter the age, no matter the physical ability! A place for fun and refreshment, a place to rejuvenate and renew, a place that can't help but remind us of our baptism!

Nearly five decades ago, God provided us the holy space that we now call Camp Kinard. Your gifts and support will help provide a chapel, a road and a swimming pool in the beauty of creation for God to continue changing lives!

Dallas Shealy

The South Carolina Lutheran Retreat Centers is a non-profit ministry of the South Carolina Synod, Evangelical Lutheran Church in America, that proudly operates Camp Kinard (Batesburg-Leesville, SC) & Coastal Retreat (Isle of Palms, SC).

(803) 532-3183 | contactus@sclrc.com | www.sclrc.com
6053 Two Notch Road, Batesburg-Leesville, SC 29070
EIN: 57-0855630